



GMT MONTHLY MEMBERSHIP PROGRESS REPORT

Results as of: 4/30/2019

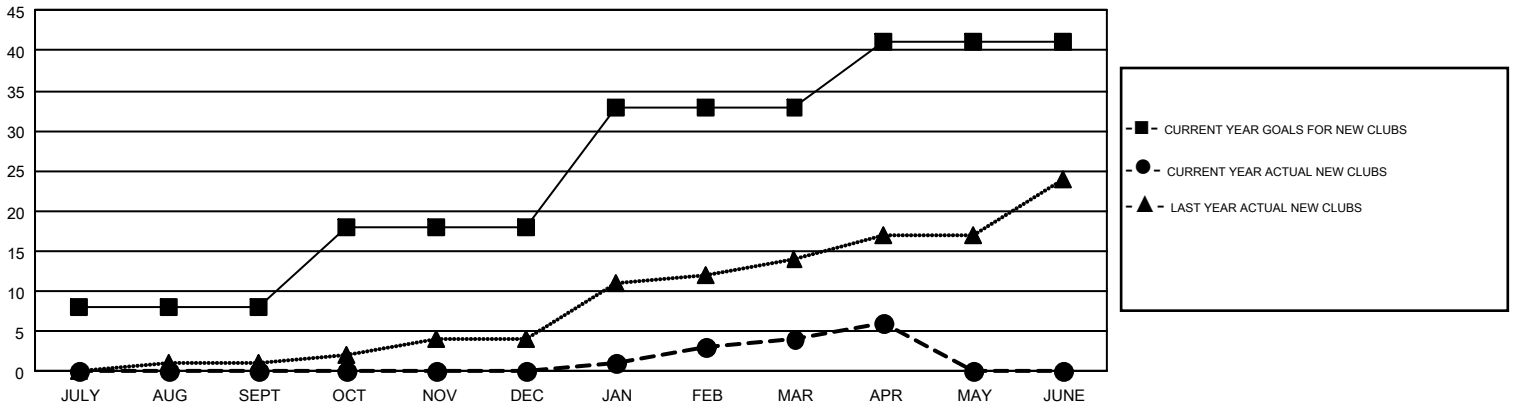
GMT Constitutional Area 1, Group A

GMT: MAHESH CHITNIS

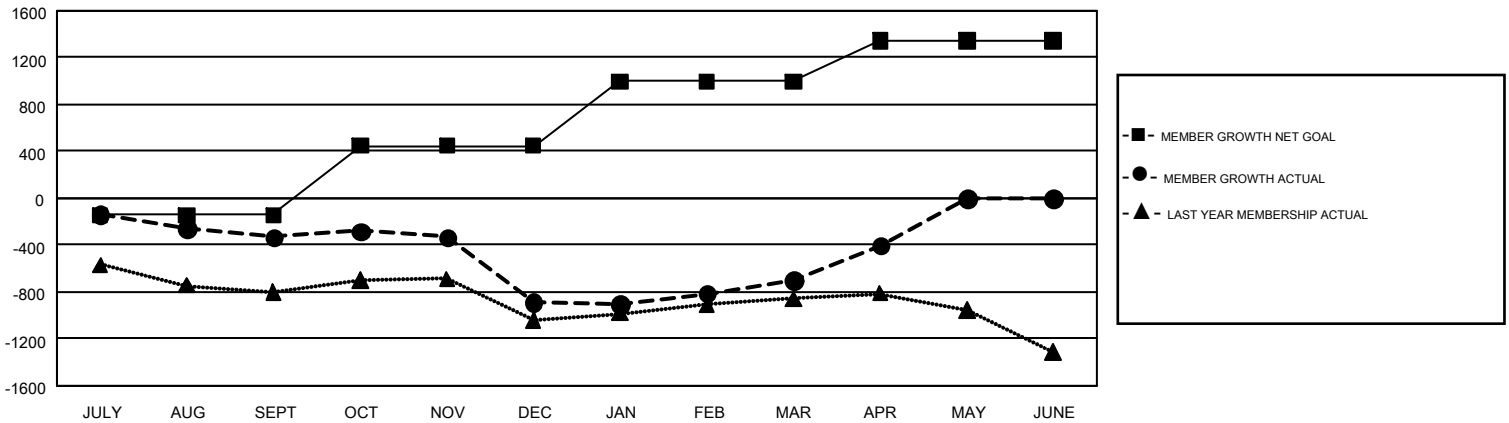
REPORT DOES NOT INCLUDE CLUBS IN UNDISTRICTED AREAS.

Clubs				Members			
RESULTS FOR 2018-2019				RESULTS FOR 2018-2019			
QUARTER	NEW CLUB GOAL	NEW CLUBS	DROPPED CLUBS	QUARTER	MEMBER GROWTH NET GOAL	MEMBER GROWTH ACTUAL	DROPPED MEMBERS ACTUAL (including transfers)
JULY/AUG/SEPT	8	0	12	JULY/AUG/SEPT	-144	851	1,022
OCT/NOV/DEC	10	0	9	OCT/NOV/DEC	593	977	1,437
JAN/FEB/MAR	15	4	4	JAN/FEB/MAR	550	1,108	811
APR/MAY/JUNE	8	2	2	APR/MAY/JUNE	342	563	256

GOALS AND ACTUAL NEW CLUBS CUMULATIVE



GOALS AND ACTUAL MEMBERS CUMULATIVE



DROPPED CLUBS: 27	859 CLUBS OF 1,536 ADDED 1 OR MORE NEW MEMBERS	GENDER DISTRIBUTION
DROPPED MEMBERS	CLICK HERE FOR CUMULATIVE MEMBERSHIP DATA	MALE 28,597 (64.35%)
DECEASED 513		FEMALE 15,843 (35.65%)
CLUB CANCELLED 88		TOTAL FAMILY UNIT MEMBERS 8,135
OTHER 2,925		FAMILY MEMBERS PAYING HALF DUES 4,199
TOTAL 3,526		